

Alan

**RYEDALE D.C.,**  
**30 JAN 2008**  
**DEVELOPMENT CONTROL**



**SIGNET PLANNING**  
VISION | STRATEGY | ACTION

SM/LH/HG0170

mortons@signetplanning.com  
28 January 2008

A Hunter Esq  
Development Control Officer  
Ryedale District Council  
Ryedale House  
Malton YO17 0HH

Dear Alan

**HIGH STREET, SLINGSBY**  
**PLANNING APPLICATION NO. 06/00807/MFUL**

Please find enclosed four copies of plans identifying further amendments to the above housing scheme. These take on board your comments of 19 December 2007 (email correspondence).

- i. The gable feature at eaves level on plot 17 has been removed.
- ii. The two properties identified as plots 13 and 14 have now been combined to provide a single four-bedroom property. As a consequence, the front dual entrance porch has been removed and replaced with a traditional entrance door that is similar in style to that fronting the High Street (plots 22-24).
- iii. The dormer windows to plots 5 and 6 and to plots 8 and 9 have been removed.

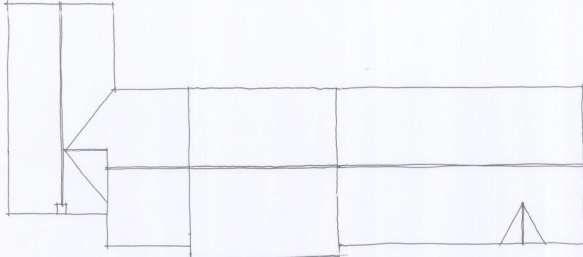
The amendments above have reduced the capacity from 25 to 24 units, although off-street car parking provision remains unchanged.

I have also enclosed a plan identifying those properties within the development site which are to be affordable (2 x two-bed coach houses; 2 x two-bed houses; 4 x three-bed houses). The type/nature of the properties chosen reflect housing market needs information provided in your email of 23 November 2007.

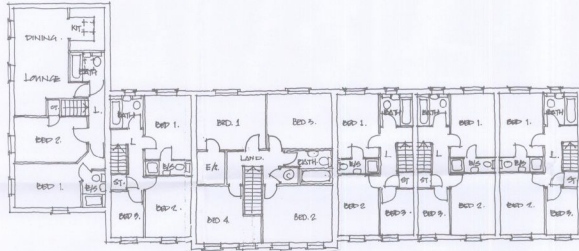
I would be grateful if you could provide these amended plans for re-consultation. If you have any comments in respect of the above then please contact me on the number given below.

Yours sincerely  
for Signet Planning

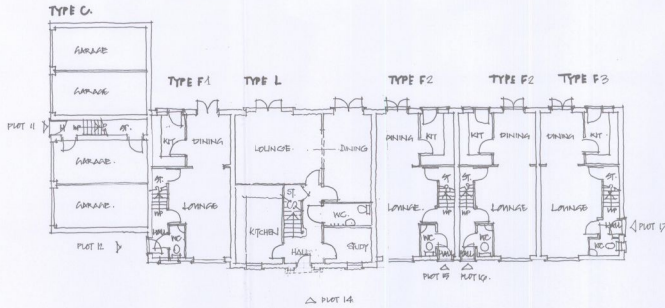
STEVE MORTON  
Senior Planner



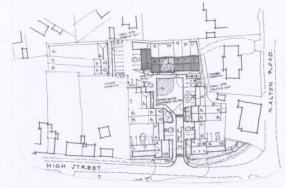
SECOND FLOOR LAYOUT.



FIRST FLOOR LAYOUT.



GROUND FLOOR LAYOUT.



INDICATIVE LAYOUT - N.T.C.

**REVISED PLAN**

RYEDALE, C.  
31 JAN 2009  
ARCHITECTURAL CONSULTANTS

REV. C. PLOT 15 REMOVED AND PREVIOUS TWO TYPE F1 (2008) BECAME TYPE L PLOT 4  
 REV. D. PLOTS F1A - SHOW OVER FEATURES - PARKING, DRIVEWAYS, 16-17-17 F1A  
 REV. A. PLOTS F1A - SHOW REMOVED PLOTS 12-17 REMOVED - 28-27-07 RD.

**VOLTRUK**

**M L M P**  
 ARCHITECTURAL CONSULTANTS

PROJECT:  
 HIGH STREET, W LINGHEBY,  
 RESIDENTIAL DEVELOPMENT.

DRAWING TITLE:  
 FLOOR PLAN - PLOTS 11-17 (NOT PLOT 15)

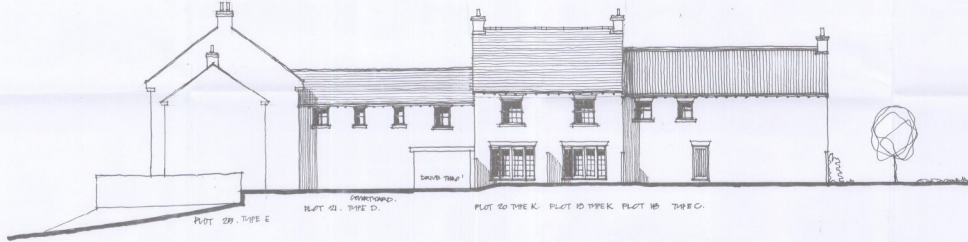
NO. 09-07 / 1108 A1 / RD / 25/06/2009 / C

© Copyright London Metropolitan University Ltd  
 01-2008-1

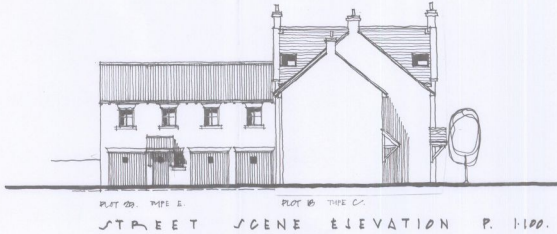
# HIGH ST, SLINGSBY.



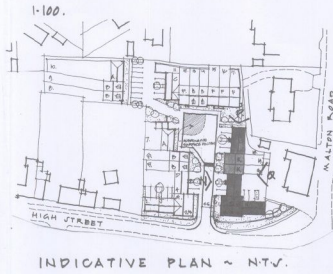
STREET SCENE ELEVATION N. 1:100.



STREET SCENE ELEVATION A. 1:100.



STREET SCENE ELEVATION P. 1:100.



INDICATIVE PLAN ~ INT.

**REVISED PLAN**

REV. C - PLANNING DEPARTMENT COMMENTS TO REV. B. 20/06/07  
 REV. B - PLANNING DEPARTMENT COMMENTS TO REV. A. 15/06/07  
 REV. A - PLANNING DEPARTMENT COMMENTS TO REV. C. 12/06/07  
 REV. C - PLANNING DEPARTMENT COMMENTS TO REV. B. 08/06/07  
 REV. B - PLANNING DEPARTMENT COMMENTS TO REV. A. 05/06/07  
 REV. A - PLANNING DEPARTMENT COMMENTS TO REV. C. 02/06/07

CLIENT & PROJECT  
**VOLTAGE**  
 HIGH STREET, SLINGSBY.  
 RESIDENTIAL DEVELOPMENT.

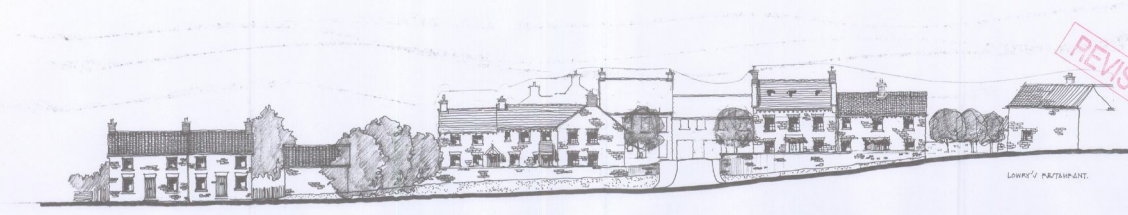
DRAWING TITLE  
 STREET SCENE V - SHEET 9.

**LAWSON MARGRISON PARTNERSHIP**  
 ARCHITECTURAL CONSULTANTS  
 513 Preston Road, Warrington, Cheshire, WA9 6RS  
 Tel: 01925 860000 Fax: 01925 860001 Email: gm@lmpartnership.co.uk

DRAWN	DATE	SCALE	REVISIONS	DRAWING NO.
K.B.	JULY 07	1:100	1	09/091/P.07

RYEDALE U.C.  
 31 JUN 2008  
 DEVELOPMENT CONTROL

# HIGH ST. SLINGSBY



TYPE WAY SIGHTS WALL SIGHTS  
STREET SCENE FROM HIGH STREET 1:200

**REVISED PLAN**

RYEDMEDIC  
11/11/10  
RESIDENTIAL DEVELOPMENT

REV C - PERM (IN CONCORD) LIVERPOOL 20/07/10 JPL  
REV B - PERM (IN CONCORD) 18/07/10 JPL  
REV A - PERM (IN CONCORD) 18/07/10 JPL

DATE	23-09-07	1:1000 A1	JPL	day/sep/07	R10
PROJECT	VOLTRUCK				
LOCATION	HIGH STREET, SLINGSBY				
DESCRIPTION	RESIDENTIAL DEVELOPMENT				
VIEW	STREET SCENE FROM HIGH STREET				



# HIGH ST, SLINGSBY.



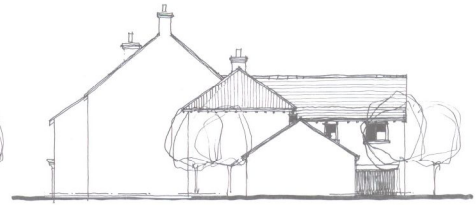
TYPE G. PLOT NO. 6-8  
STREET SCENE ON A. PLOTS 3-7

TYPE D. PLOT NO. 4

TYPE E. PLOT NO. 5

TYPE B. PLOT NO. 6

TYPE A. PLOT NO. 7



TYPE G. TYPE B. PLOT NO. 6  
STREET SCENE ON B.

TYPE A. PLOT NO. 7

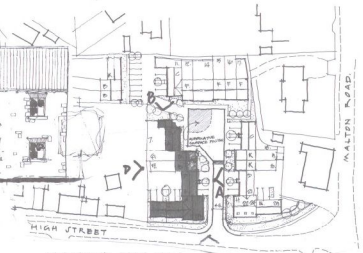


TYPE C. PLOT NO. 1  
STREET SCENE ON C. PLOTS 1-2

TYPE G. PLOT NO. 2 AND 3

TYPE H. PLOT NOS 22-24

TYPE D. PLOT NO. 25



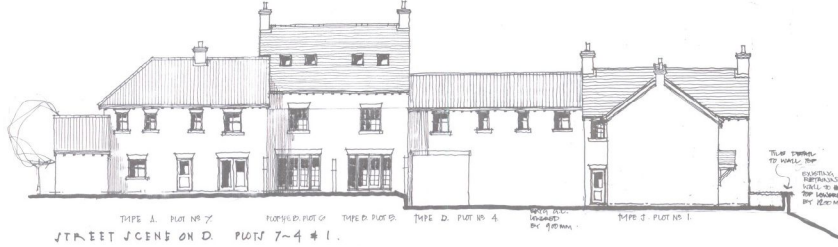
INDICATIVE PLAN - N.T.S.

REV. F. TRANSFER COMMENTS FROM DRAWING 10/10/05  
REV. G. DIMENSIONS REDUCED BY 1/4" (6mm) TO FIT ON PLOT NO. 2 & 3  
REV. H. DIMENSIONS REDUCED BY 1/4" (6mm) TO FIT ON PLOT NO. 2 & 3

REV. C. PLAN WORKS, CONSTRUCTION, MATERIALS, HEIGHTS AND FINISHES  
REV. D. PLOTS 1-7 AMENDED AS PER REV. B & C  
REV. E. ACCESS ROAD REDUCED TO 14' 6" (4.4m) TO FIT ON PLOT NO. 7. VULG. LAMP POSTS AT PLOTS 1, 2 & 3  
REV. F. DIMENSIONS REDUCED BY 1/4" (6mm) TO FIT ON PLOT NO. 2 & 3  
REV. G. DIMENSIONS REDUCED BY 1/4" (6mm) TO FIT ON PLOT NO. 2 & 3  
REV. H. DIMENSIONS REDUCED BY 1/4" (6mm) TO FIT ON PLOT NO. 2 & 3

REV. A. PLOT 1-4 LAYERS NEW INDICATIVE PLAN  
REV. B. LAYERS NEW INDICATIVE PLAN  
REV. C. LAYERS NEW INDICATIVE PLAN  
REV. D. LAYERS NEW INDICATIVE PLAN  
REV. E. LAYERS NEW INDICATIVE PLAN  
REV. F. LAYERS NEW INDICATIVE PLAN  
REV. G. LAYERS NEW INDICATIVE PLAN  
REV. H. LAYERS NEW INDICATIVE PLAN

REVISED



TYPE A. PLOT NO. 7  
STREET SCENE ON D. PLOTS 7-4 #1.

TYPE G. PLOT NO. 6

TYPE D. PLOT NO. 4

TYPE B. PLOT NO. 6

TYPE A. PLOT NO. 7

CLIENT & PROJECT  
VOLTRUCK  
HIGH STREET, SLINGSBY.  
RESIDENTIAL DEVELOPMENT

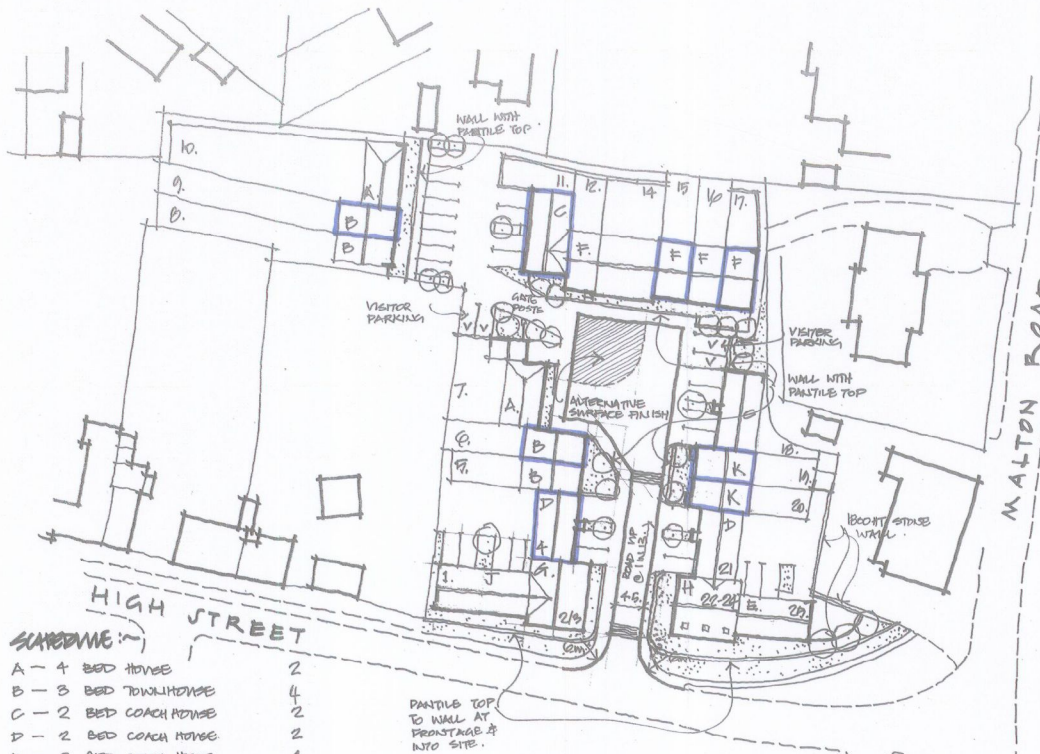
DRAWING TITLE  
STREET SCENE / SHEET 1.

LAWSON MARGHERSON PARTNERSHIP  
ARCHITECTURAL CONSULTANTS  
113 FRODO ROAD, WILTON IN WILTON  
DUNDEE, ARGENTINA PH 01382  
PA 01382 863333 Email: gm@lmp.co.uk

DATE	REVISIONS	DRAWING NO.
JULY 05	A, B, C, D, E, F, G, H	05/001/P.05

SCALE 1:100





REVISED PLAN

RYEDALE DC.  
30 JAN 2008  
DEVELOPMENT CONTROL

**SCHEDULE**

A - 4 BED HOUSE	2
B - 3 BED TOWNHOUSE	4
C - 2 BED COACH HOUSE	2
D - 2 BED COACH HOUSE	2
E - 2 BED COACH HOUSE	1
F - 3 BED HOUSE	4
G - 3 BED APARTMENTS	2
H - APARTMENTS 1 BED	1
2 BED	2
J - 3 BED COACH HOUSE	1
K - 2 BED HOUSE	2
L - 4 BED HOUSE	1
24	

Affordable homes:  
 2 x two bed coach houses  
 2 x two bed houses  
 4 x three bed houses

REV. E. PLANNERS COMMENTS 04.12.07 KB  
 REV. D. PLANNERS COMMENTS 23.07.07  
 REV. C. PLANNERS COMMENTS 16.05.07 KB  
 REV. B. PLANNING COMMENTS 22.01.07 KB  
 REV. A. PLANNING COMMENTS 22.05.06 KB

CLIENT: <b>VOLTRUCK.</b>			
PROJECT: <b>HIGH STREET, SLINGSBY. RESIDENTIAL DEVELOPMENT.</b>			
DRAWING TITLE: <b>SITE LAYOUT.</b>			
DATE: <b>JULY 05</b>	SCALE: <b>1:500</b>	DRAWN: <b>KB</b>	DEVD No: <b>05/001/P.01.</b>
			REV: <b>E.</b>

**LMP**  
 ARCHITECTURAL CONSULTANTS  
 213 PRESTON ROAD  
 WHITFIELD, LEICESTERSHIRE  
 LEICESTERSHIRE  
 LE12 6PS  
 TEL: 01530 241000  
 FAX: 01530 241001  
 E-MAIL: group@lmp.co.uk  
 © Copyright Lennan Macmillan Practice Ltd  
 M 522353 R